



www.csoft.com

WisImage 11 for AutoCAD

AutoCAD 2010 compatible

CAD-style raster processing

Ultimate image enhancement tools

Automatic and semi-automatic R2V conversion

FineReader OCR in each Pro version

Several rasterization engines

Scanning module with direct support of wide-format scanners

WisImage®

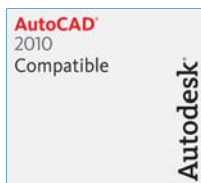
WisImage 11 for AutoCAD – raster and CAD crossroad

WisImage 11 for AutoCAD solves the problem of incorporating scanned raster data into a CAD environment. This is done by adding native CAD-style raster editing and raster-to-vector conversion inside AutoCAD to facilitate revision creation and new drawing production. WisImage 11 for AutoCAD includes all technology and research results from previous years and starting new era with real integration of CAD and image processing.

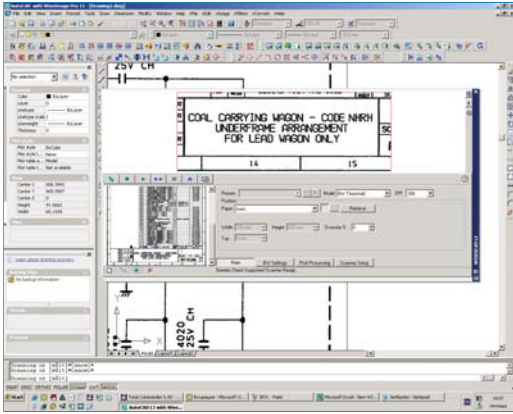
WisImage 11 for AutoCAD offers an updated exclusive set of enhancement tools to be applied to black/white as well as grayscale and color images. WisImage allows user to edit, update, and convert (both semi-automatically and automatically) to vectors scanned maps, drawings, sketches, and other graphics. True ObjectARX technology, the possibility to use AutoCAD dialogs and settings, and an advanced customizable interface, makes WisImage 11 a natural part of AutoCAD environments. WisImage 11 for AutoCAD is the unique tool for wide range of applications - such as GIS, cadastral, aerial and satellite image processing, architecture, engineering, schematics to mention a few.

New features and user's benefits

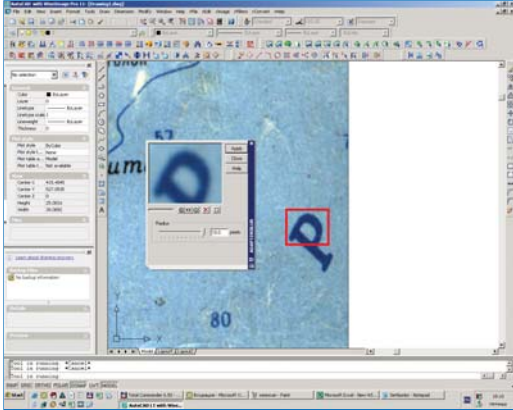
- Total integration with Autodesk in technology, operational control and engine
- Updated Scanning module with direct support wide-format and TWAIN scanners
- Image enhancement and restoration inside AutoCAD
- CAD style raster selection, snapping and editing
- Various automatic raster-to-vector conversion and tracing options for black and white, colour and grayscale images, including OCR by FineReader 9 Engine
- Several rasterization modes with help of a precise rasterization engine
- Multi-window preview feature
- Special dialog window for calibration with advanced calibration tools
- Adaptive Binarization - unique tool for blueprints and sepias
- Smart colour palette manager - Color Classifier
- Dockable and transparent dialog windows and tool palettes
- Symbol Recognition Template Library - a single source for symbol templates for symbol tracing, raster-to-vector conversion, hybrid selection and Search & Replace
- Vector Automatic Correction with a rich set of options
- Polylines Automatic Correction with a rich set of options for merging, and combining polylines
- Adaptive Blur filter for blurring non-uniform color areas inside color transition boundaries in grayscale and color images
- Search and Replace on colour images with support of Symbol Recognition Template Libraries



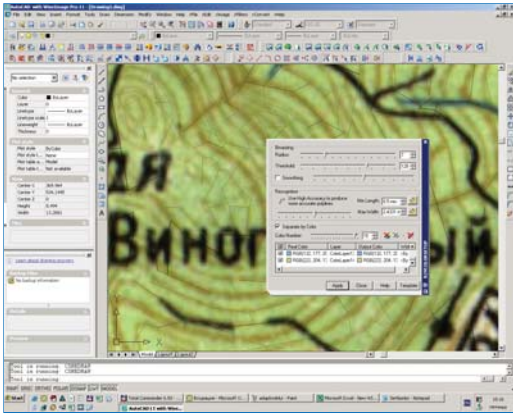
CSoft



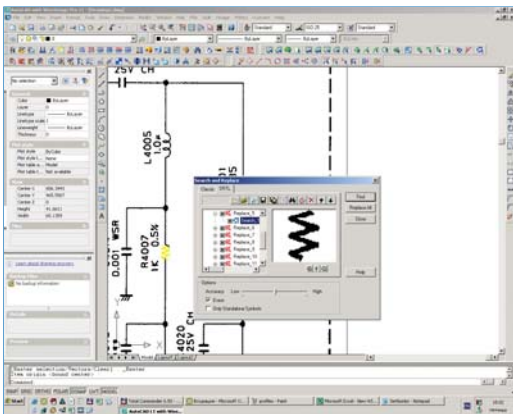
WiseScan



Adaptive Blur



Colour raster-to-vector conversion



Search and Replace

Selection, editing and image enhancement

WisImage combines premium tools to process scanned drawings, satellite imagery, or other raster graphics for seamless and efficient CAD integration. Image cleanup, correction, calibration, bit-depth reduction and raster-to-vector conversion with WisImage eliminates repetitive and time-consuming manual procedures.

Intelligent Object Selection technology of Consistent Software allows the selection of raster data by using AutoCAD-style tools - by picking; inside rectangle or polygon; by crossing rectangle, polygon, polyline, etc. Raster objects (raster lines, arcs and circles) have properties (line type, line width, etc.) and precise geometry, which can be changed in the AutoCAD properties dialog. You can also modify the geometry of raster objects by their "grips". Object snapping for raster objects is consistent with the AutoCAD snap (that only works with vectors).

WisImage for AutoCAD has a variety of tools for enhancement and correction of color, grayscale and monochrome raster images. There are color and monochrome filters and image restoration tools such as: color correction, deskewing, four-point correction, elimination of linear and non-linear image distortions, cropping, rotation, resizing, etc. You can correct an image using a specified set of commands with one click. User can easily manage the colors of the image and create/edit LUT files in the Color Classifier or can perfectly operate with blueprints (scanned in grayscale mode) by a specific tool - Adaptive Binarization.

Tracing capabilities

To convert a raster symbol, line, arc, circle or outline to a vector object, a user only has to pick a point on the source raster object. The tracing mode can be set to retain, delete or smooth the original raster object. WisImage can also recognize raster hatches and trace arbitrary raster curves by AutoCAD polylines. When tracing polylines, the program can automatically define the most probable trace direction. You can trace monochrome, color and grayscale images.

Automatic raster-to-vector conversion (Pro version)

When applying automatic vectorization, the user needs to set recognition parameters before starting the procedure. WisImage for AutoCAD recognizes and converts to corresponding vector objects raster lines, arcs, circles, symbols, points, polylines, outlines, hatches and text. The program also recognizes raster line types, widths and dimension arrows. WisImage for AutoCAD can process colour, grayscale or black and white images.

The results of automatic vectorization often require further correction - this can be done automatically with tools that will merge vector fragments, create orthogonal lines, and round objects widths to specified values. Resulting vector objects can be separated by weight, AutoCAD layers and color.

During automatic raster-to-vector conversion WisImage for AutoCAD converts raster texts to AutoCAD text entities. It is also possible to convert raster texts to polylines or outlines. Text recognition is provided by the world leading FineReader OCR Engine 9.0. You can also use external OCR modules.

Working with Symbols

WisImage offers several advanced options for working with raster and vector data. One of them is the unique technology to select or separate raster objects into other layers, which is based on intelligent selections and a brand new selection engine including the new smart WiseObject (text, hatches, lines) selection. This feature is complimentary to the well-known Symbol Search-and Replace feature of WisImage.

Your local partner is:

Expand

圖庫實業有限公司

TEL:02-23578460 FAX:02-23418506

http://www.expand.com.tw

E-Mail:service@email.expand.com.tw

台北郵政91-151號信箱

CSOFT

CSOFT AS
Storgaten 26,
N-2000 Lillestrom, Norway
Phone: +47 6484 7110
Fax: +47 6484 7111
E-mail: sales@cssoft.com
Internet: www.cssoft.com